

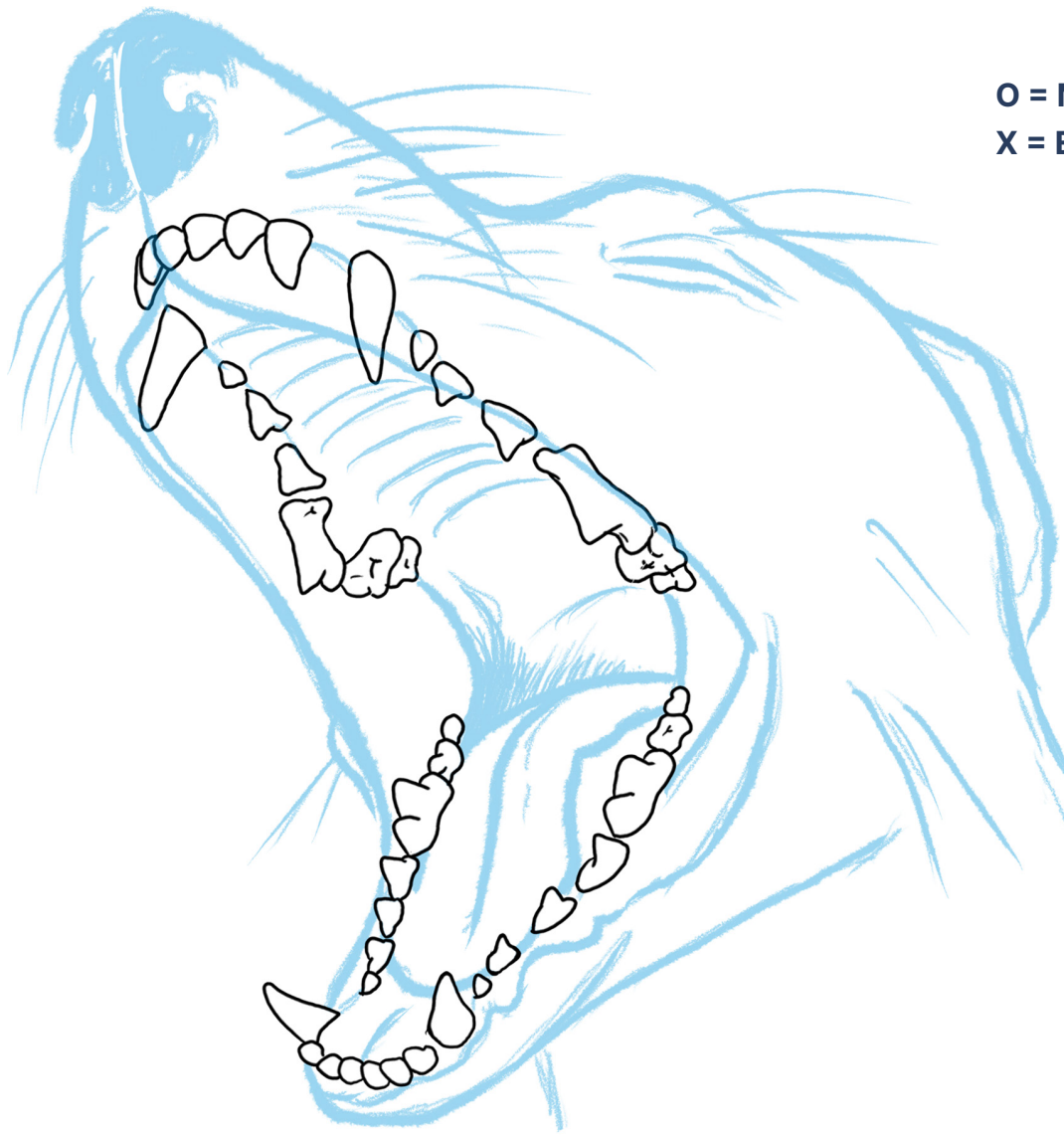
Dental Assessment & Treatment Details

Dog's Name _____

Owner's Name _____

Date _____

O = Missing
X = Extracted



Notes



Periodontal disease



STAGE 1 Gingivitis

Stage 1 is early gum inflammation caused by plaque buildup, leading to redness, swelling and bleeding without bone loss. It is fully reversible with proper dental care, including professional cleanings and tooth brushing.



STAGE 2 Early Periodontal Disease

Stage 2 involves early attachment loss, where infection causes mild damage to the supporting structures of the teeth, including slight bone loss. Prompt treatment can slow or halt progression.



STAGE 3 Established Periodontal Disease

Stage 3 shows moderate attachment loss with deeper pockets, gum recession, and noticeable bone loss. Teeth may become loose, and ongoing treatment is essential to manage pain and prevent further damage.



STAGE 4 Established Periodontal Disease

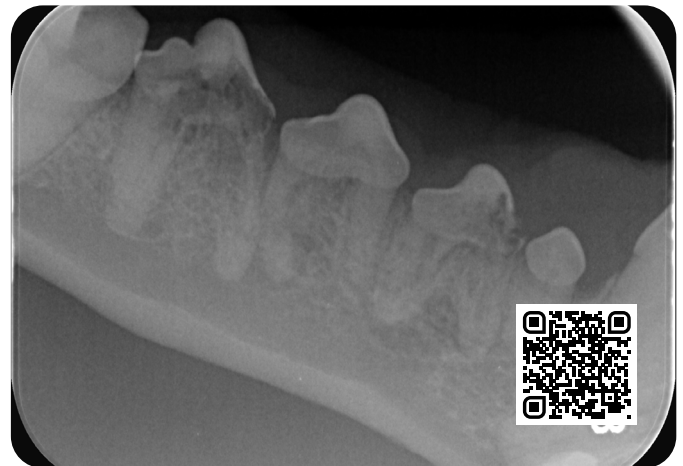
Stage 4 is advanced disease, with severe bone and tissue loss, loose or missing teeth, pain, and possible infection. Aggressive treatment or extractions are often needed to restore comfort and health.

Fractured Teeth



When a tooth breaks, it can expose the pulp and cause significant pain. It also increases the risk of infection or an abscess. Depending on the damage, we may recommend a filling, root canal or extraction. If you suspect a tooth is damaged, it's important to have it assessed as soon as possible.

Tooth Resorption



Often hidden below the gumline, this condition can weaken a tooth from the inside out. It may cause pain, infection or lead to fracture, even when the tooth looks perfectly normal. Extraction is the only effective treatment, so early detection through dental X-rays is essential.